

**SOLID TO SUCCEED**

# XC8-S3580 BACKHOE LOADER



**XCMG EARTHMOVING MACHINERY  
BUSINESS DIVISION**

CUSTOMER SERVICE  
HOTLINE (IN CHINA): **400-110-9999**

ADDRESS: NO. 99, KUNPENG NORTH ROAD, XUZHOU ECONOMIC  
DEVELOPMENT ZONE, JIANGSU PROVINCE, CHINA  
ZIP CODE: 221004  
TEL: 0516 87938888  
EMAIL: sales@xcmg.com  
SITE: <http://www.xcmg.com>

2023-03

1. Scan the QR code to follow "XCMG Loading Machinery"  
2. Click the "Loader King" in the lower left corner to  
obtain more product details after registration



## About XCMG

As a 100 billion-level leading company renowned for the largest scale, the most advanced technology, the largest export volume, and the highest competitiveness and influence in China's construction machinery industry, Xuzhou Construction Machinery Group Co., Ltd. (XCMG) not only has dominated the Chinese market for decades, but also is committed to expanding its worldwide presence as the third largest supplier in this field and 395th of Global 500.

The product portfolio offered by XCMG covers 16 categories such as hoisting machinery, excavation machinery, concrete machinery, mining machinery, earthmoving machinery, and road construction machinery, as well as three key components, i.e., hydraulic systems, transmission systems and electrical control systems. In these areas, our hoisting machinery ranks first in the world, and our complete solutions for road construction and maintenance machinery, piling machinery and concrete machinery also take the leading position in global rankings.

XCMG has been granted more than 8,000 patents in total, including more than 1,900 invention patents and more than 130 international PCT patents.

We have established our own R&D centers, manufacturing plants or KD factories in more than 10 countries, e.g., Germany, USA, Brazil and India, and have acquired 3 European companies including Schwing from Germany.

The manufacturing factory in Brazilian, which is built on a barren land with an investment of USD 350 million, has become a successful model of China-Brazil economic cooperation. At present, our products are exported to 187 countries and regions, covering 97% of the countries along the "Belt and Road". XCMG takes the largest share of the business exported to 35 countries, with the annual export volume and overseas revenue remaining in first place and outperforming all other competitors in China.





## Description & Features

- ▼ Relying on XCMG global R&D platform, XCMG Construction Machinery Co. Ltd., according to its deep insight of customer needs, launched a brand new XC8-S3580 backhoe loader with excellent reliability, environmental adaptability, safety, maintainability, maneuverability and cost effectiveness.
- ▼ XCMG is equipped with STAGE V engine, the power shift transmission and heavy-duty steering drive axle (or optional CARRARO transmission axle), four-wheel multi-mode steering, flow-sharing load-sensing hydraulic system, fully enclosed luxury cab, and ergonomic electro-hydraulic joystick, XC8-S3580 can not only ensure excellent digging and loading performance, but also provide users with comfortable operating experience. It is ideal for a variety of applications, such as municipal and highway construction and maintenance, water conservancy, army rescue and disaster relief operations and equipment support.
- ▼ XC8-S3580 is configured with a 1.3 m<sup>3</sup> shovel bucket and a 0.26 m<sup>3</sup> digging bucket as standard, featuring high loading and digging capabilities, four-wheel multi-mode steering, small turning radius, and easy site transfer. The front and rear wheels are equipped with 16.9-28 large-size tyres to ensure excellent passability. Up to 25 types of operating tools are optional to realize one machine with multiple functions, enabling application in a variety of scenarios.

## Description & Features



- ▼ Smooth-line appearance featuring XCMG family design language.
- ▼ Powerful, energy-saving and environmental-friendly Euro V engine, high-efficiency drive technology, able to meet operational requirements in different scenarios.
- ▼ Load-sensing hydraulic system, enabling flexible and precise control.
- ▼ 360° panorama and large-space cab designed with sealed and anti-vibration structure for comfortable and safe riding experience.
- ▼ Front and side instrument panels with large LCD screens, enabling intuitive display of the machine status and convenient human-machine interaction.
- ▼ High-strength operating units for a wide range of applications and outstanding functionality.
- ▼ A variety of operating tools available to meet the requirements of different fields and operating conditions.

## Advanced



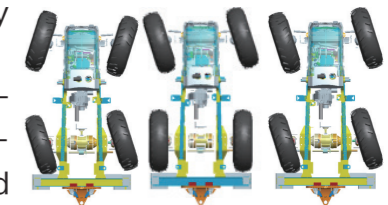
- World-class brand engine featuring excellent power performance, large torque reserve, less fuel consumption, reduced noise, and low emission certified according to the STAGE V standard.
- The joystick is integrated into the seat, and able to perform all standard and combined actions, no matter facing the loading end or the digging end.
- Electro-hydraulic proportional control, ensuring high-accuracy operation, easy combined actions and higher work efficiency.



## Energy-saving



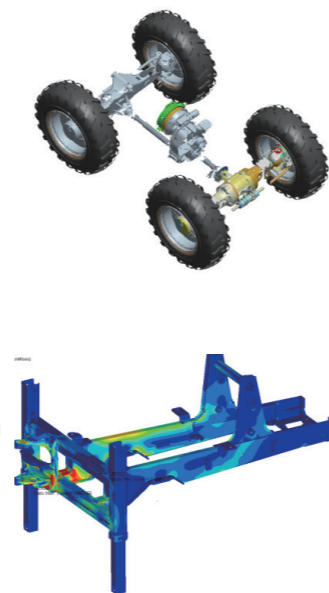
- Electronically-controlled engine with high-pressure common rail, improving combustion efficiency and cost effectiveness, and reducing fuel consumption.
- High-efficiency power matching technology, effectively reducing driving resistance and energy consumption.
- High-efficiency four-wheel drive and steering technology, supporting multiple steering modes, allowing switchover between two-wheel drive and four-wheel drive, and automatic switchover to two-wheel drive at Gear 4, to ensure cost-effective loading and driving operations.
- Variable displacement load-sensing open hydraulic system, featuring high efficiency, low heat generation and less energy consumption.



## Reliable



- XCMG power shift transmission for backhoe loader, ensuring stable performance.
- XCMG drive axles for backhoe loader, large-size tyres with high load capacity, improving the adaptability of the machine in harsh environments;
- Integrated frame, optimized design for loading and digging units, featuring light structure and high strength, key load-bearing parts designed with enhancement to withstand torsion and impact loads and ensure higher reliability and durability even in complex working conditions.



## High efficiency



- Able to reach the operation site quickly due to the increased driving speed; large tractive force, high gradeability, and large-size tyres configured on the front and rear wheels to ensure outstanding off-road performance.
- Optimized gear ratio of the heavy-duty box axle, combined with multiple four-wheel steering modes, providing excellent traction and operating capabilities while ensuring higher flexibility and efficiency.
- Optimized operating units designed with eight-linkage structure, outperforming competitors in terms of main parameters such as dumping height, dumping range and breakout force; the change of the bucket angle limited within 1.5° during the lifting process to ensure excellent translational movement.
- Digging unit designed with straight-arm structure, featuring ideal digging depth and radius, wide digging range, and digging force up to 65kN to ensure high work efficiency.
- Dozens of operating tools available for the loading end and the digging end, allowing quick changeover according to different operating needs.



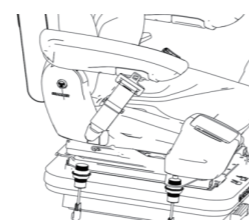
## Comfortable

- Luxury cab designed with split side and rear windows, realizing wider field of view during operation and comfortable driving experience.
- Electronically-controlled joystick for digging and loading operations, ensuring top-class driving experience.
- Enabling automatic retraction of the outriggers with one button, to ensure simple and easy operation.
- Switchover between ISO and SAE digging modes with one button, in order to meet the needs of different users.
- Mechanical suspension seat covered with knitted fabrics, and configured with retractable safety belt as standard.
- Concealed intelligent high-power air conditioner with heating and cooling modes, able to maintain constant temperature and defrost with warm air.
- Optimized HMI based on the front and right-side instrument panels with large LCD screens.



## Safety

- Two-in-one cab designed with ROPS and FOPS structure, providing comprehensive protection for the driver's safety during operation and driving.
- Maintenance-free hydraulic wet brake system, with small braking distance to ensure safe driving.
- Operating unit designed with interlock function, that is, the operating unit is only allowed to perform a desired action when the seat position switch is in the set position and the corresponding action enable switch is activated, in order to ensure safe operation.



- ▼ Enable the user to check the operation and maintenance status of the machine in real time via a mobile phone, PAD, computer and other devices, and to make accurate evaluation of the project and select suitable tools accordingly through data collection and analysis.

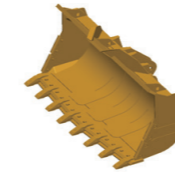
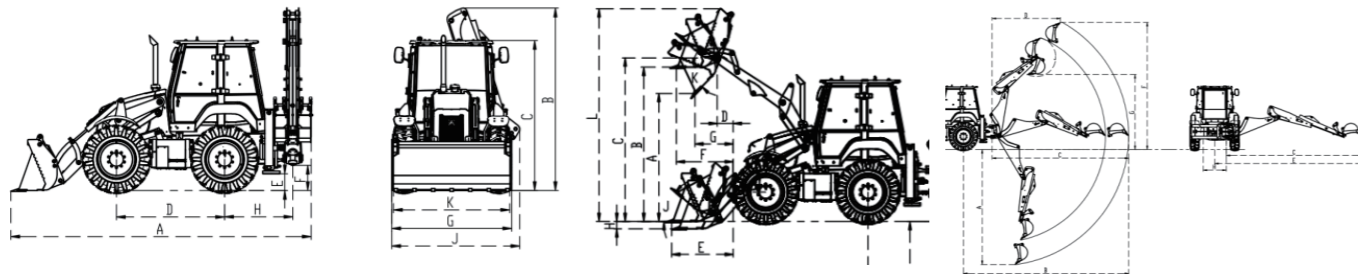


- Optimize device matching
- Increase productivity
- Improve management efficiency
- Reduce operating costs
- Minimize operational risks
- Optimize profitability

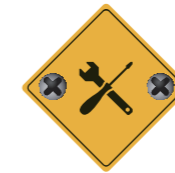
- ▼ Provide the "full-life-cycle service" for worry-free experience in the whole service life! Build a world-wide service network covering the whole planet!
- ▼ Implement a global digital spare parts service system to provide digital services conveniently, quickly and efficiently!



## Dimensions



XCMG approved attachments



Genuine parts



Financial solutions



Maintenance contract



Telematics

Item	Unit	Parameter
Dimensions	A Overall length	mm 6137
	B Overall height	mm 3716
	C Cab height	mm 3056
	D Wheel base	mm 2209
	E Outrigger plate ground clearance	mm 341
	F Rotary body ground clearance	mm 512
	G Bucket width	mm 2450
	H Rear overhang length	mm 1394
	J Overall width	mm 2587
	K Width (outside of tyres)	mm 2380
Loading parameters	Turning radius (outside of front wheel)	mm 4345
	Turning radius (outside of bucket)	mm 5345
	A Max dumping height	mm 2763
	B Max loading height	mm 3329
	C Max bucket pin height	mm 3531
	D Pin front span at max height	mm 345
	E Front span on ground	mm 1330
	F Front span at max height	mm 1229
	G Dumping range at max dumping height	mm 828
	H Digging depth for loading	mm 156
J Rollback angle	° 42	
K Dumping angle	° 45	
L Max working height	mm 4592	
Rated load	kg 3500	
Max bucket breakout force	kN 72.6	
Max boom breakout force	kN 56.8	
Lifting capacity at max lifting height	kg 4636	
Bucket capacity	m <sup>3</sup> 1.3	
Total	s ≤10	

Item	Unit	Parameter	
Digging parameters	A Max digging depth	mm 4353 / 5555 (Arm fully retracted / Arm fully extended)	
	B Max digging radius (from the center of rear axle)	mm 6874 / 8000	
	C Max digging radius (from turntable center)	mm 5480 / 6606	
	D Front span at highest position	mm 2327 / 3304	
	E Max side digging distance (from machine centerline)	mm 5986 / 7131	
	F Max digging height	mm 5393 / 6143	
	G Max loading height	mm 3628 / 4378	
	H Side shift distance	mm 1120 / 1120	
	J Bucket rotation angle	° 195 / 195	
	Bucket digging force	kN 65 / 65	
	Arm digging force	kN 38.6 / 26.9	
	Rotation angle	° 180 / 180	
	Bucket capacity	m <sup>3</sup> 0.26 / 0.26	
	Operating weight	Kg 9750±200	
	Complete machine	Max tractive force	KN ≥90
Max gradeability		° ≥20	
Model		— 904J-E36TA	
Engine	Manufacturer	— PERKINS	
	Rated power	(kW) 82	
	Rated speed	(r/min) 2200	
	Max torque	(N.m) 500	
	Displacement	(L) 3.621	
Emission standard	— STAGE V/T4F		
Drive system	Model	— CA596748/MYF120	
	Manufacturer	— CARRARO/XCMG Transmission	
	Type	— Power shift	
	Speed at Forward Gear 1	km/h 6	
	Speed at Forward Gear 2	km/h 10	
	Speed at Forward Gear 3	km/h 21	
	Speed at Forward Gear 4	km/h 38	
	Speed at Reverse Gear 1	km/h 6	
	Speed at Reverse Gear 2	km/h 10	
	Speed at Reverse Gear 3	km/h 21	
	Speed at Reverse Gear 4	km/h 38	
	Front tyre model	— 16.9-28	
	Rear tyre model	— 16.9-28	
	Type	— Open	
	Hydraulic system	Pump	Type — Variable displacement piston pump
System pressure		Maximum flow	L/min 160
		Loading system	bar 250
		Digging system	bar 250
		Steering system	bar 160
Fuel tank capacity	L 160		
Hydraulic oil tank capacity	L 80		

## Professional Integrated Complete Solutions

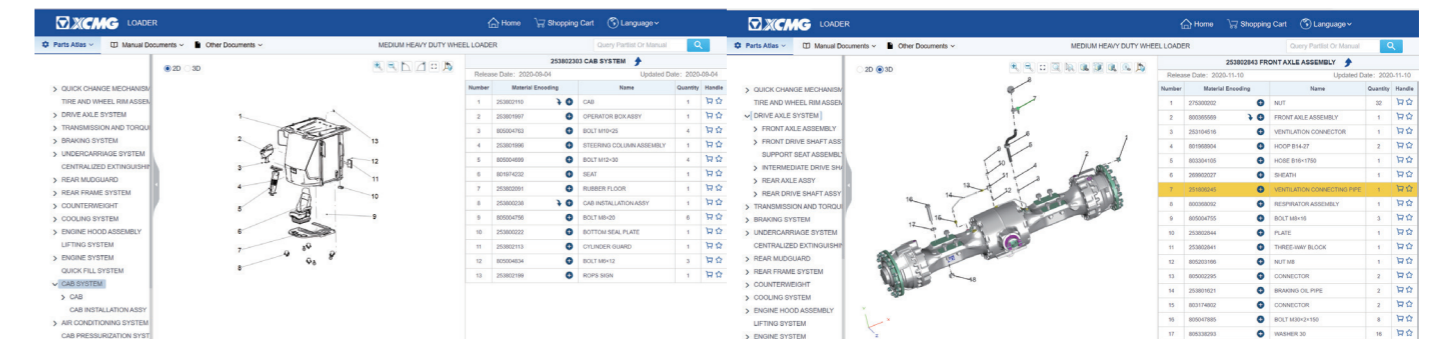
XCMG has built a strong reputation based on the quality, reliability and durability of its construction machinery. What's more, XCMG has gradually established a service network to constantly provide its local integrated and highly efficient complete solutions for all customers.

## Full Range of Services Ready for you

In order to respond to your needs as fast as possible, XCMG's experts are on their way to your job site from one of our facilities near you. Full range of services are available in order to reduce your total cost of ownership and increase your revenue.



## XCMG Global Spare Parts System



- The technology of XCMG backhoe loaders is subject to constant improvement and upgrading. In case the specifications or detailed appearance contained in this brochure differ from actual products, the latter shall prevail;
- XCMG reserves the right of final interpretation for the above. Our products may be modified without prior notice to users.