



All Rights Reserved

Materials and specifications are subject to change without notice.
Featured machines in photos may include additional equipment.
See your XCMG dealer for available options.



XC948E

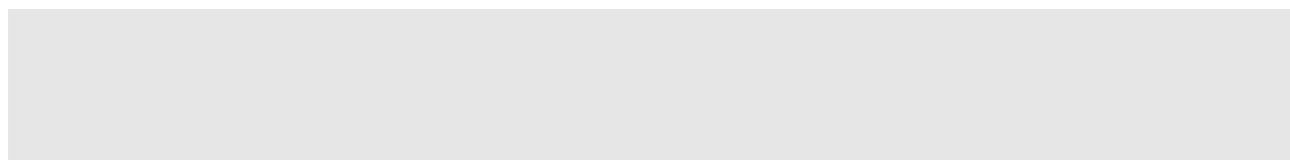
WHEEL LOADER

EU Stage V/EPA Tier IV



www.xcmg.com

XCMG Regional Departments:



XUZHOU CONSTRUCTION MACHINERY GROUP IMP. & EXP. CO., LTD

Add: No.1, Tuolanshan Road, Xuzhou Economic Developing Zone, Jiangsu, China 221004

Fax: (+86-516) 87739230

E-mail: export@xcmg.com





INTRODUCTION OF XCMG

Founded in 1943, XCMG is a multinational corporation with the most comprehensive range of competitive, influential products in the construction machinery industry. Our business covers eight key areas: construction machinery, heavy trucks, mining machinery, sanitation machinery, machinery components, construction, finance, and the ICT industry.

XCMG has established a global R&D network with a total of six centers in China, the US, Germany, Brazil and India, with China national technology center at its core. In addition to a number of manufacturing bases in China, the US, Germany, the Netherlands, Poland, Austria, Brazil, India, and Uzbekistan, we possess two complete machine brands (XCMG, Schwing), and several component brands including FT, AMCA. It is the strength of this global R&D network and manufacturing operations that has made XCMG the industry leading global construction equipment manufacturer that it is today.

For more than 30 years, XCMG has been sowing the seeds of overseas development as the No. 1 exporter in China's construction machinery industry. Today, we have 42 branches and offices, 315 distributors, 526 contractors in 188 countries and regions worldwide and are still growing rapidly.

XCMG IN EUROPE

Since its foundation in 2012, XCMG is gradually establishing a complete network including: R&D department, local distribution, supply chain management and an integrated customer services training centre. Nowadays, with 4 branches, XCMG has 178 multinational employees in Europe, of which more than 50% are R&D engineers:

ERC: XCMG European Research Center GmbH

EPC: XCMG European Purchasing Center GmbH

ESS: XCMG European Sales and Services GmbH

Our local professional R&D team and cutting-edge innovation platform guarantee that our products are carefully crafted to the smallest detail according to diverse needs of European customers.



OVERVIEW

XC948E are developed by XCMG for North American market integrating advanced design idea. XC948E meets EU Stage V/Tier 4 emission standard, its overall design fits human aesthetic, the rear flip engine hood and side flip cab makes its maintenance more convenient. XC948E are comfortable in operation, fuel-efficient, reliable and durable.



PERFORMANCE AND FEATURES

High Reliability

- ▶ Cummins B6.7 Engine, complying with Cummins B6.7 Engine providing power of complex working conditions and providing power of complex working conditions.
 - Automatic 4BP 190 torque converter, reduced shifting impact in travelling for various working conditions.
 - XCMG high performance wet axle, meeting high loaded working requirements.
 - Full hydraulic wet brake system of high reliability and maintenance free.
- ▶ Extra heavy load frame structure design, FEA analysis on key structural to ensure strong structure and extended machine life.
- ▶ Wear-resistance and impact-resistance high strength steel plate for bucket material.



High Working Efficiency

- ▶ Optimized linkage structure and hydraulic system with breakout force up to 140kN.
- ▶ JRB is the first choice for Quick Coupler in North America.
- ▶ The coupler controls are conveniently located in the Cab.
- ▶ Bucket features discharge at high position, auto leveling and lifting limited technologies, reducing working cycle time.
- ▶ Travel speed up to 36km/h with high transfer efficiency.



Comfort Operation

- ▶ Spacious and ergonomic cab with excellent visibility.
- ▶ FOPS/ROPS cab with heat and air conditioning provides good air flow through multiple vents.
- ▶ The cab is well seated and insulated to provide a dust proof environment.
- ▶ All switches are conveniently placed.
- ▶ Digital gauges monitor the machine vital functions.
- ▶ Suspension seat with lumbar support reduce operator fatigue.
- ▶ Integrated F-N-R electronic lever of shifting function for precise control, easy operation and high working efficiency.



High Safety Performance

- ▶ Complying with standards of ISO 5006 operator vision field.
- ▶ Complying with standards of ISO 3449, ISO 3471, ISO 3164 ROPS/FOPS cabs.
- ▶ Complying with standard of ISO 2867, ISO 2860 ladders, passageway, operation platform and exit/ excess.
- ▶ Flame retardant material applied in cab interiors, extinguisher equipped.
- ▶ Complying with standards of ISO 10533, ISO 10570 lifting arm bracket and hinged lock devices.



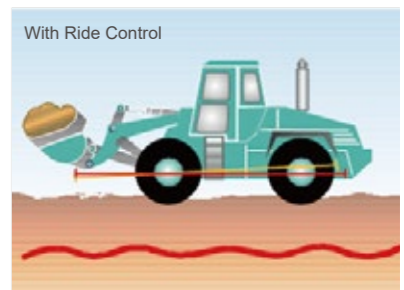
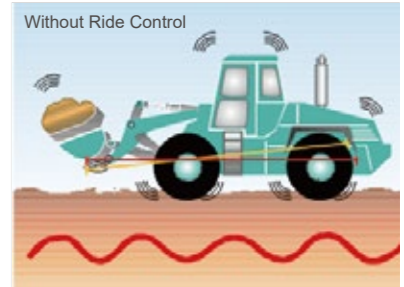
Easy Maintenance

- ▶ The new digital combination meter, the vehicle running status and various types of information at a glance.
- ▶ Side-turn cab and large-angle integral side for complete display of all key components for easy maintenance and service.
- ▶ Single row of large tone radiators, upturned back cover.
- ▶ Centered electrical fuse box for effortless check up and high reliability.
- ▶ Remote centered lubrication, drainage pressure testing of daily maintenance.



Energy Saving

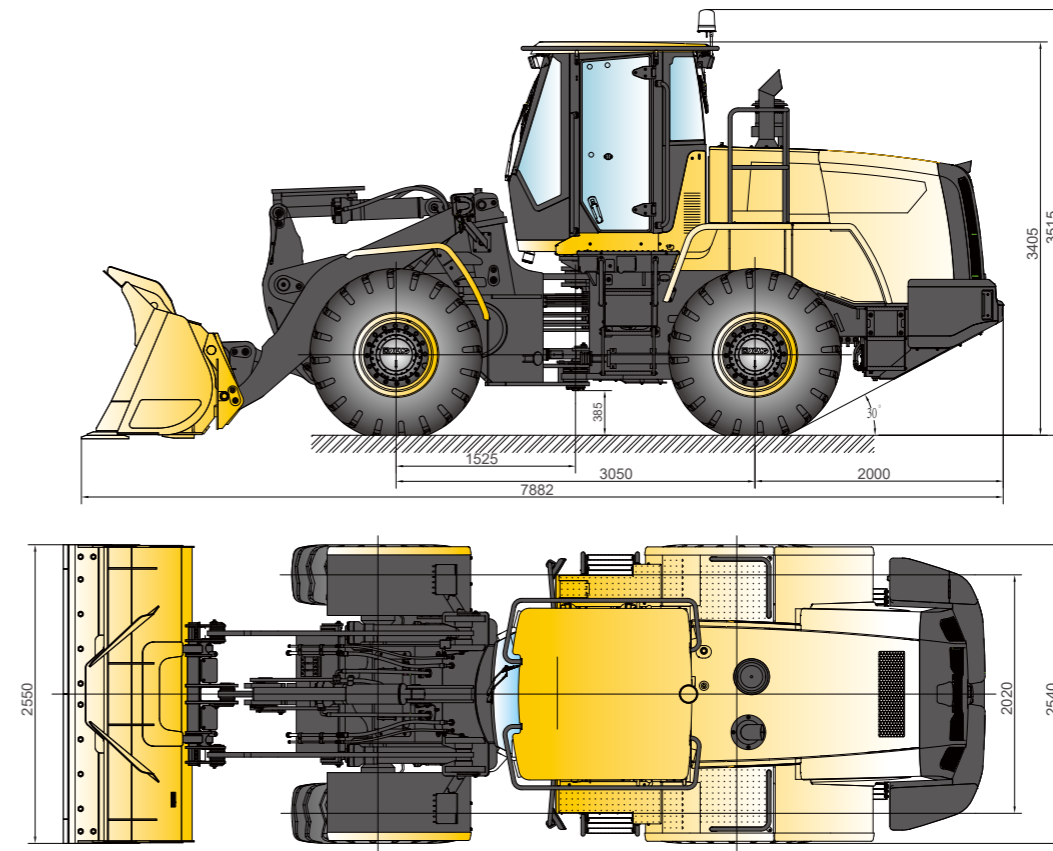
- ▶ Load sense hydraulic system featuring automatic adjusting operation condition, improving fuel efficiency.
- ▶ Intelligent independent cooling system, fan rotation on request for energy and noise reduction. Separated cooling layout with improved cooling efficiency and fuel efficiency.
- ▶ Full automatic torque converter, two working mode, enabling the operator match the optimum efficiency according to working requirement.
- ▶ Pilot control lever integrating F-N-R shifting function minimizing operation motions with higher working efficiency.
- ▶ Improved traveling performance and load retention.



TECHNICAL SPECIFICATIONS

| Program | Parameter | |
|---------------------------------------|-------------------------------|-------|
| Rated bucket capacity /m ³ | 2.4 | |
| Rated working load /kg | 4500 | |
| Operating weight /kg | 16500±300 | |
| Dumping height /mm | 2841 | |
| Dumping reach /mm | 1010 | |
| Wheelbase /mm | 3100 | |
| Track /mm | 2020 | |
| Minimum ground clearance/mm | 410 | |
| Overall length /mm | 7882 | |
| Overall height /mm | 3405 | |
| Bucket width /mm | 2550 | |
| Maximum breakout force/kN | 140 | |
| Maximum traction force/kN | 135 | |
| Turning radius (Center of Tire) /mm | 5200 | |
| Boom lifting time /S | 4.5 | |
| Total cycle time /S | 9.5 | |
| Model | B6.7 | |
| Engine | Rated power /KW | 149 |
| | Declared rotating speed/r/min | 2200 |
| Tire | 20.5R25 | |
| Drive Speed/Km/h | Forward/Reverse 1 | 7/7 |
| | Forward/Reverse 2 | 13/13 |
| | Forward/Reverse 3 | 24/24 |
| | Forward4 | 38 |

Note: the job content of standard machine is as below: moderate all kinds of lubricants, full fuel oil and the operator with the weight of 75kg.

OUTLINE DIMENSIONS

OPTIONAL CONFIGURATIONS

- 20.5R25 radial tires
- ride control system
- emergency steering system
- low temperature start system
- automatic centered lube system
- closed rear fender
- machine protection in landfill
- lengthened boom
- various buckets (or customized)
- several attached tools



XCMG approved attachments



Genuine parts



Financial solutions



Maintenance contract



Telematics

Professional Integrated Complete Solutions

XCMG group has built a strong reputation based on the quality, reliability and durability of its construction machinery. What's more, XCMG has gradually established a service network to constantly provide its local integrated and highly efficient complete solutions for all customers.

Full Range of Services Ready for you

In order to respond to your needs as fast as possible, XCMG experts are on their way to your job site from one of our facilities near you. Full range of services are available in order to reduce your total cost of ownership and increase your revenue.



XCMG Global Spare parts System



Mobile cranes



Excavators



Aerial work platforms



Wheel loaders



Road machinery

