

All Rights Reserved

Materials and specifications are subject to change without notice.  
Featured machines in photos may include additional equipment. See your XCMG dealer for available options.



Hydraulic Excavators  
**XE300E**  
**XE300EN**



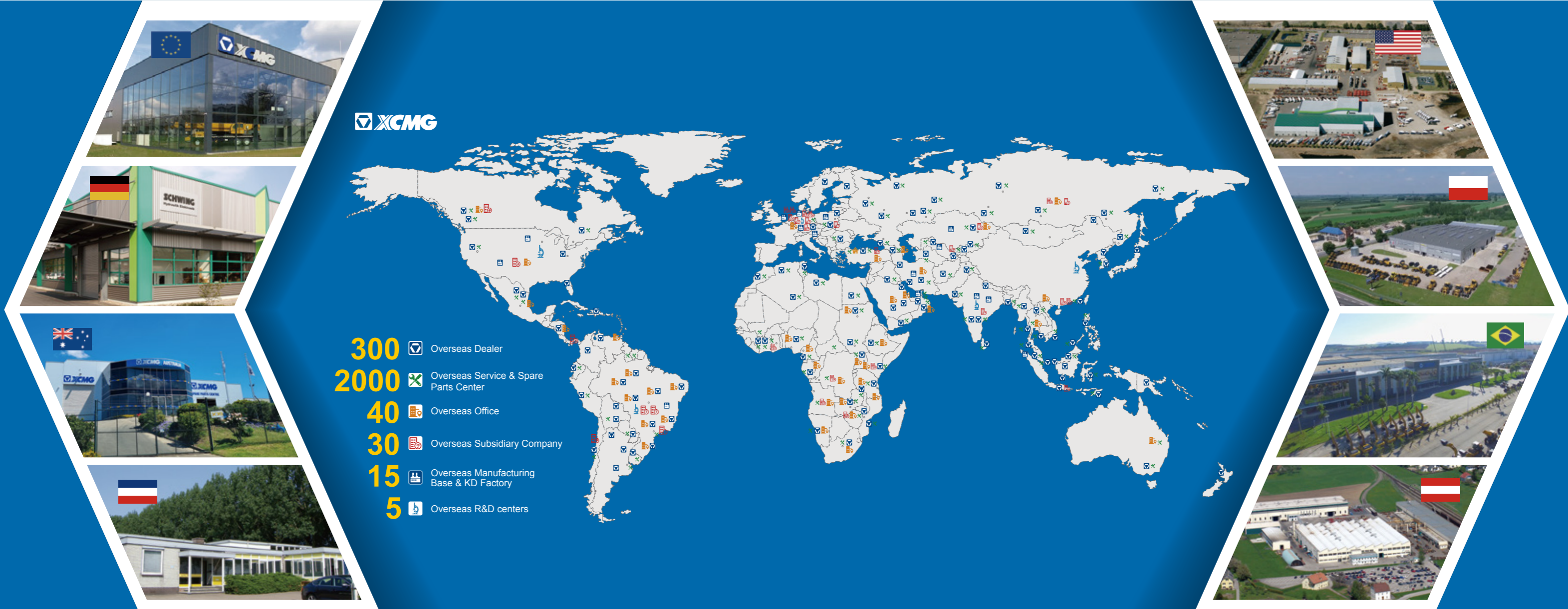
**XCMG European Sales and Services GmbH**  
Address: Europark Fichtenhain B 4, 47807 Krefeld, Deutschland  
Tel: +49 (0) 2151 8206 890  
Fax: +49 (0) 2151 8206 899  
E-Mail: [info@xcmg-ess.de](mailto:info@xcmg-ess.de)

**XUZHOU CONSTRUCTION MACHINERY GROUP IMP. & EXP. CO., LTD**  
Address: No.1, Tuolanshan Road, Xuzhou Economic Developing Zone, Jiangsu, China 221004  
Tel: +86(0) 516 8773 9703  
Fax: +86(0) 516 8773 9230  
E-Mail: [europe@xcmg.com](mailto:europe@xcmg.com)

[www.xcmg.com](http://www.xcmg.com)

Rated Power: 173 kW  
Operating Weight: 32100-33500 kg  
Standard Bucket Capacity: 1.4 m<sup>3</sup>





## INTRODUCTION OF XCMG

Founded in 1943, XCMG is a multinational corporation with the most comprehensive range of competitive, influential products in the construction machinery industry. Our business covers eight key areas: construction machinery, heavy trucks, mining machinery, sanitation machinery, machinery components, construction, finance, and the ICT industry.

XCMG has established a global R&D network with a total of 5 centers in China, the US, Germany, Brazil and India, with the China national technology center at its core. In addition to a number of manufacturing bases in China, the US, Germany, the Netherlands, Poland, Austria, Brazil, India, and Uzbekistan, we possess two complete machine brands (XCMG, Schwing), and several component brands including FT and AMCA. The strength of this global R&D network and the manufacturing operations made XCMG the industry-leading global construction equipment manufacturer that it is today.

For more than 30 years, XCMG has been sowing the seeds of overseas development as the No. 1 exporter in China's construction machinery industry. Today, we have 40 branches and offices, 300 distributors, and 526 contractors in 188 countries and regions worldwide and are still growing rapidly.

## XCMG IN EUROPE

Since its foundation in 2012, XCMG is gradually establishing a complete network including: R&D department, local distribution, supply chain management and an integrated customer services and training center. Nowadays, with 3 branches, XCMG has over 100 multinational employees in Europe, of which more than 50 % are R&D engineers:

ERC: XCMG European Research Center GmbH

EPC: XCMG European Purchasing Center GmbH

ESS: XCMG European Sales and Services GmbH

Our local professional R&D team and our cutting-edge innovation platform guarantee that our products are carefully crafted to the smallest detail according to the diverse needs of European customers.



XCMG XE300E/XE300EN builds further on its reputation as one of the most sold and appreciated excavators for XCMG. The further development resulted in a product that is more fuel efficient on the one side and more productive at another side.

If you are looking to get your work done with a durable brand, you can trust XCMG and look no further than our XE300E/XE300EN.

#### RELIABILITY:

Even under the harshest conditions, XCMG has made its aim to build long-life products. XCMG has already a long relationship with the best component suppliers in the world. Cummins engines, XCMG hydraulic pumps, main control valve and swing motor, and high-quality travel motors guarantee you the best performance. Oversized cylinders in combination with long-life reinforced pins, polymer shims and bushings ensure best performance with unchanged durability.

#### PRODUCTIVITY AND EFFICIENCY:

Strong and unmatched bucket and arm digging forces give the XE300E/XE300EN the ability to fulfill various work, and improve productivity and efficiency.

#### SAFETY SOLUTIONS:

"Rear & Right cameras", and large side mirrors, powerful LED lighting, anti-slip steps and platforms. Guard rails for safe access to the upper structure. The ROPS (Roll Over Protective Structure) and the OPG (Operator Protective Guard) cabin ensure the operator's safety

#### VERSATILITY:

Multiple boom and arm sizes together with special configurations are available to efficiently carry out any task your business requires.

#### EASY-TO-USE ATTACHMENTS:

Programmable auxiliary lines AUX1 (single and dual way), AUX2 and PTO independent pump control technology are provided to support your hydraulic attachments like grabs, shear, hammer and many more.

#### COMFORTABILITY:

To ensure operator comfort, we offer a spacious cab with low noise and vibration levels and excellent allround visibility. Fully adjustable heated air suspension seat seat and air conditioning with climate control as standard.

#### CONTROLLABILITY:

7 work and 3 power modes, proportional control, user-friendly 8" TFT LCD color monitor.

#### STRONG POWER:

The Cummins B6.7 stage V/Tier 4 Final engine is exceptionally powerful - with high torque at low revs. It makes that the maximum flow is already available at low revs with a fuel-efficient status.

#### ADVANCED FILTRATION:

Easily accessible highly efficient filters and cleaners that remove all contaminations from your jobsite and protect your investment in the best possible way.

#### SIMPLE AND EASY MAINTENANCE:

Easy access to all compartments. Maintenance data and signs are directly available from a monitor.

#### UNDERCARRIAGE DURABILITY:

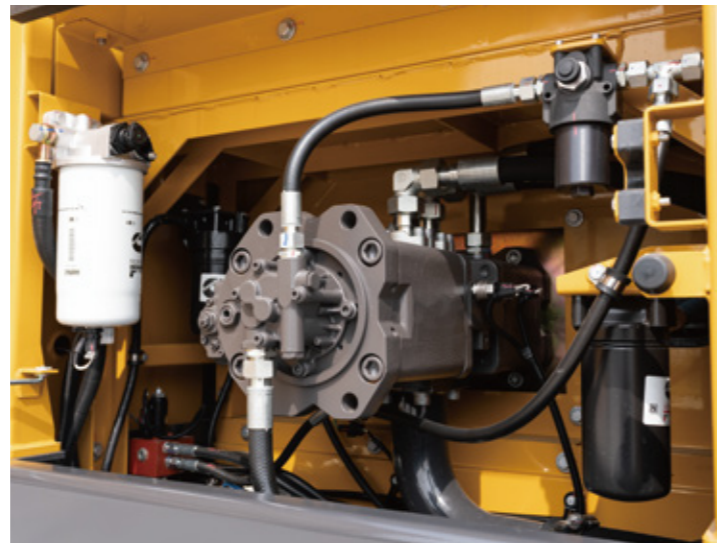
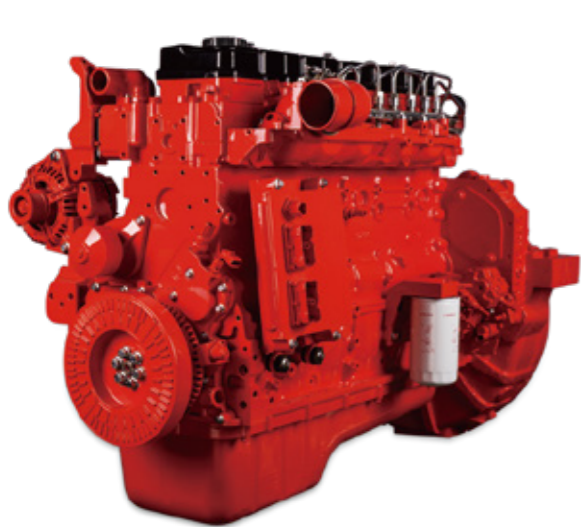
The CAE-designed X-shape undercarriage enables even weight distribution, increases stability and durability, and prevents damage from rocks and debris.



## Excellent Performance and Fuel Economy

### Power without compromise

- XE300E/XE300EN makes your work efficient and comfortable.
- The optimized XCMG hydraulic system ensures that all the engine power is used in the best possible way by delivering accurate maximum flow in a smooth way.
- All the power reliably increases the digging force, lifting capacities and the traction force.
- Higher fuel efficiency means that your usage costs are low and reduces the environmental impacts.



### Power Match Technology

XE300E/EN is equipped with a Cummins B6.7 engine. Famous for its excellent fuel efficiency, reliability and long service intervals, it combines exceptional power output and high torque at low revs.

Selective Catalytic Reduction (SCR) technology in combination with a Diesel Particulate (DPF) - ensures the compliance with Stage V regulations.

If the engine is the heart of the excavator, the XICS (XCMG Intelligent Control System) is its brain – providing a perfectly synchronized communication link between the engine's ECU (Electronic Control Unit) and the hydraulic system. The CAN (Controller Area Network) system enables a constant flow of information between the engine and the hydraulic system, so that power is delivered exactly as needed.

### Fuel Economy Technology

- A choice between 3 power modes and 7 attachment modes guarantees optimum performance under all conditions.
- Electronic control of fuel consumption.
- The auto-idle function reduces the engine speed when the controls is inactive for a preselected amount of time or when the safety lever is switched off. The engine will immediately return to its original selected speed when the operator touches the controls.
- For optimum cooling, the fan speed is controlled by a viscous clutch that results in lower fan noise with better fuel efficiency.

## First Choice for Comfort

The XE300E/XE300EN cabin is designed to support the increased productivity with a spacious and comfortable operating environment. The pressurized cabin is ISO-certified for your safety, offers a comfortable, heated, and fully adjustable air suspension seat, several storage compartments, and a clear all-round view of your jobsite. The reduced noise and vibration levels with automatic air-conditioning/climate-control will make your workday easier and more comfortable.

### Advanced control technology

Ergonomic, advanced, and simple-to-operate joystick delivers ultra-precise and smooth control over all movements.

### Air conditioning with automatic climate control

A choice from 7 different working modes to regulate the airflow and to adjust the system's air temperature maintains the optimal desired temperature. A recirculated air function is also available.

### AM-FM radio and DAB Bluetooth radio

AM-FM radio is standard, DAB Bluetooth radio is optional, and both are equipped with Bluetooth function.

### Storage space

The new cab has sufficient storage compartments-including a storage box, a document bag and a cup holder.

### Cab suspension

Even at the roughest applications where you are working, the cab's improved new suspension system dampens and smoothens out unwanted feedback from your jobsite.





# Simple and Easy Control



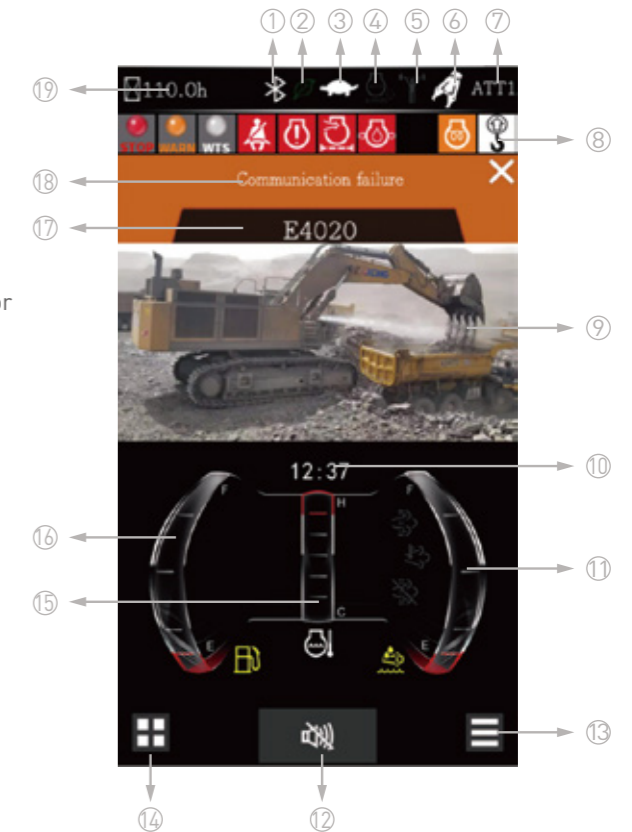
## Machine interfaces

All machine interfaces – including joysticks, the keypad, the panel, and the larger LCD monitor – are ergonomically designed for optimum control and efficiency, resulting in increased productivity and workplace wellbeing. The switches have been simplified and climate control is now integrated into the control panel for easy adjustments.

- The new multi-function 8" TFT LCD monitor displays a comprehensive range of useful technical information, allowing you to check the machine's status and settings at a glance.
- High sensitive & low-damping joysticks and convenient controls enable you to work smoothly and safely with minimum effort.
- The newly adjustable proportional auxiliary functions and PTO independent pump control technology support the precise and smooth control of your attachments.

## Intelligent Monitor

The upgraded 8" TFT monitor features a day and night display with full user access to the machine settings and maintenance data. Any abnormality is clearly displayed on the screen, allowing you to work safely and confident with an accurate overview of all conditions. All important data can be directly monitored from the main screen.



- |                                      |                                 |
|--------------------------------------|---------------------------------|
| 1. Blue-tooth                        | 2. Energy-saving mode indicator |
| 3. Travel speed indicator            | 4. Automatic idling indicator   |
| 5. Power reinforcing indicator       | 6. Implement mode indicator     |
| 7. Power mode indicator              | 8. Alarm icon prompt area       |
| 9. Surveillance image                | 10. Clock time                  |
| 11. Urea level                       | 12. Buzzer silence indicator    |
| 13. Main interface function settings | 14. Main menu                   |
| 15. Coolant temperature gauge        | 16. Fuel level gauge            |
| 17. Fault code display               | 18. Fault analysis content      |
| 19. Work hour display                |                                 |

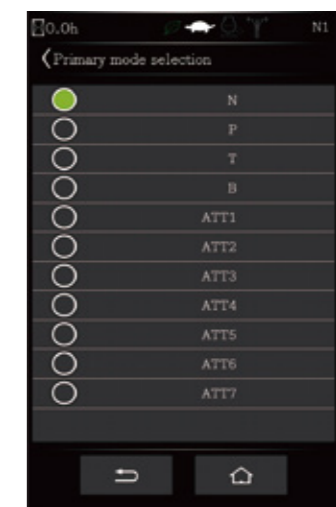
## Dynamic power management

- Activating the power boost control system increases the digging force by 8.8%.
- Auto-idling starts 4 seconds after all controls are returned to the neutral position.

## 7 work modes and 3 power modes

Deliver the needed power according to your specific application while minimizing the fuel consumption:

- N: Normal mode
- P: Power mode
- T: Plateau mode
- B: Breaker mode
- ATT1: Hydraulic shear mode
- ATT2: Hydraulic thumb mode
- ATT3: Hydraulic rotating attachment mode
- ATT4/ATT5/ATT6/ATT7: Auxiliary mode



- 1 Spacious operator's space
- 2 Large travel pedal
- 3 Mechanical suspension seat
- 4 Power outlet
- 5 Throttle dial
- 6 All around AC and heating
- 7 DAB radio
- 8 Hydraulic joysticks
- 9 High quality loudspeaker
- 10 Hammer control pedal
- 11 Engine stop switch in the cab
- 12 Color LCD monitor
- 13 Storage compartment (1 out of 7)
- 14 Safety lever
- 15 Cup holder

## Designed for long-term robustness and safety

XCMG has developed one of the most rigorous strength and reliability testing procedures. The XCMG E-series features durability under the most extreme conditions and is therefore one of the most popular brands in its home market.

We continually manufacture the most durable machines in order to reduce the cost of ownership. The robust upper frame, undercarriage structure, and front attachments show their real value in tough working conditions and guarantee higher productivity.

### Reinforced durability of the X-chassis

The X-shaped undercarriage has a higher durability than demanded on the jobsite, as proven through numerous tests including road tests and virtual simulation.



### Undercarriage durability with easy maintenance

- The chain is composed of sealed, self-lubricating links for long-term performance
- Long life track tensioners and the idlers
- Heavy-duty wear resistant cast sprockets
- Durable lubricated track rollers

### Strengthened boom and arm

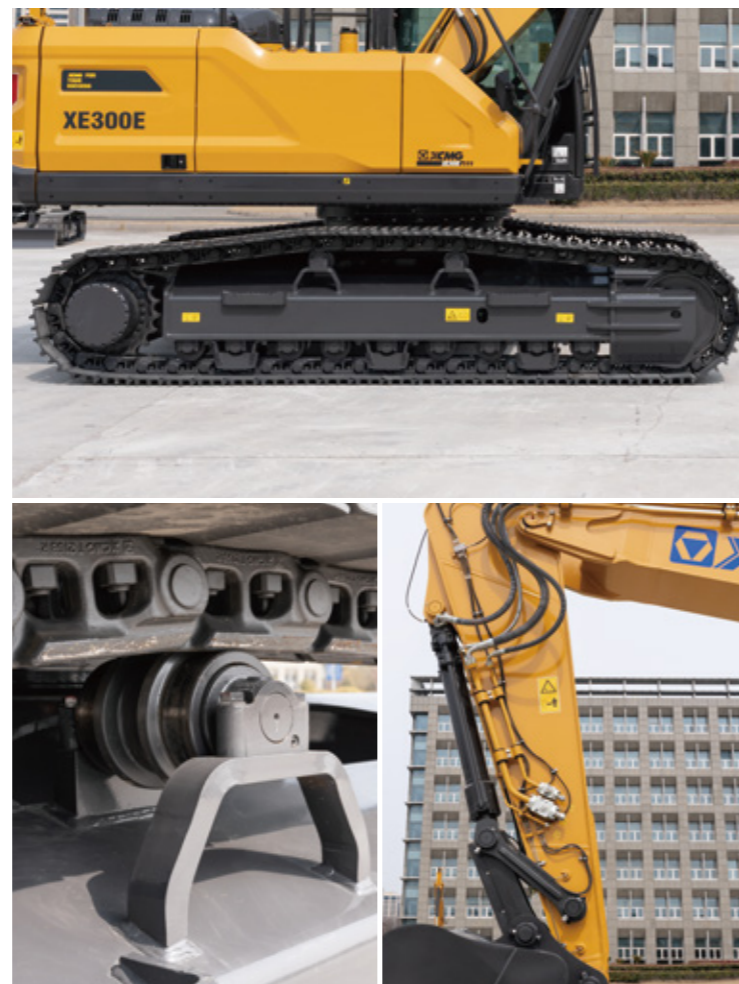
FEA has been used to calculate the best load distribution throughout the machine's structure. For better protection of the base of the arm, reinforced bars have been added. The arm structure has been strengthened for the roughest conditions.

### Hi-grade (high-pressure) hoses

The E-series uses a new type of high-pressure hoses with improved heat and pressure resistance to increase the durability of the machine.

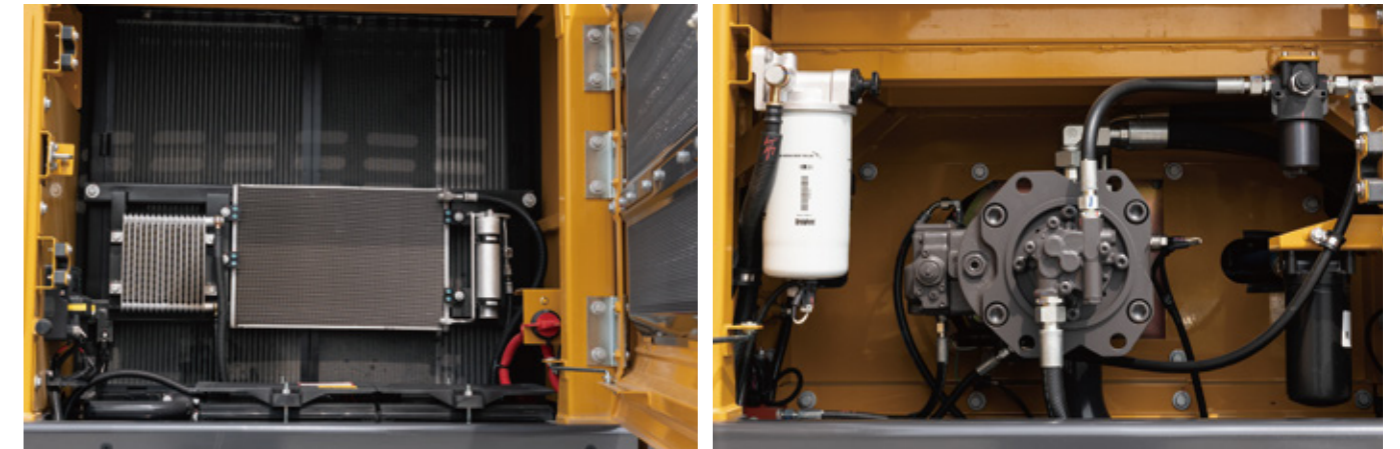
### Reinforced pin, bush and polymer shim

The new series improved the lubricity of the connecting parts between the machine and attachments. Gaps with attachments are minimized by wear-resistant long-life pins, bushes, and polymer shims, supporting the highest performance with invariable durability.



## Excellent serviceability

Our machines are designed for simple routine maintenance, while skilled XCMG technicians are available to provide extra support if needed. To get the most out of your machine, choose the package you need from a broad range of service agreements. Uptime, productivity and residual value are all maximized, making the XE300E/XE300ENE an economical and rewarding choice.



### Simple and easy maintenance

- A large guard rails are installed along with anti-slip steps and plates, for safer and easier access to the whole upper structure
- The cab's air-conditioning filter is lockable and placed on the cab's side for easy access
- A battery cut-off switch to easily disconnect the battery for jobsite-required safety measures
- Shut-off valves on the pre-filter piping line and the fuel tank drain piping make servicing easier and prevents pollution from
- The engine parts can be reached easily via the top and side
- For extra accessibility and servicing convenience, all filters (engine oil filter, fuel pre-filter, fuel filter and hydraulic pilot filter) are located in the pump compartment

### Pre-start monitoring system

The XE300E/XE300EN has a pre-start monitoring system that shows you coolant temperature, hydraulic oil temperature, engine oil pressure, fuel levels, and the AdBlue® level. It will also show fluid and filter intervals to keep the machine in top performing condition.

### Proactive maintenance solutions

- Extended warranty: covering parts, travel and labor
- Routine maintenance: your dealer will support you with routineservice at regular intervals
- Genuine parts: manufactured and tested to ensure long lifetime of your machine.

### SCR tank and easy diesel filling

The ECU (Engine Control Unit) monitors with sensors of the AdBlue® system and warns the operator for potential system malfunctions. A fuel filler pump, an on-board pump system, lets you fill your fuel tank quickly from an external source (like a fuel drum) – the system stops automatically when the fuel tank is full or the fuel source is empty.

### Automatic lubrication system

The full point automatic lubrication system makes the maintenance much easier.

## ■ Engine

Designed to deliver superior performance and fuel efficiency, the Cummins Stage V diesel engine fully meets the latest emissions regulations. To optimize machine performance, the engine uses high-pressure fuel injectors, a VGT™ turbocharger inter-cooler and electronic engine controls. A 4-cycle water-cooled, turbocharged, Exhaust Gas Recirculation (EGR) and Selective Catalytic Reduction (SCR) without a Diesel Particulate Filter (DPF).

XE300E/XE300EN	
Model	Cummins B6.7
No. of cylinders	6
Rated power at 2000 rpm	173 kW (232 hp) at 2000 rpm
[SAE J1995]	—
[SAE J1349]	—
[ISO 9249]	149 kW(200 hp) at 2000 rpm
Max. torque at 1500 rpm	949 N·m
Idle (low - high)	700 - 1200 rpm
Piston displacement	6.7 L
Bore × stroke	107 mm × 124 mm
Starter	24 V × 7.8 kW
Batteries - Alternator	2 × 12 V, 120 Ah - 24 V, 70 A
Air filter	*Donaldson's the latest PSD air filter and pre-filtered dust separator

## ■ Undercarriage

Extremely robust construction throughout - made of high-quality, durable materials, with all welded structures designed to limit stresses.

- Lifetime lubricated track rollers, idlers and sprockets fitted with floating seals
- Track shoes made of induction-hardened alloy with triple grouser
- Heat-treated connecting pins
- Hydraulic track adjuster with shock-absorbing tension mechanism

### • Number of rollers and track shoes per side

XE300E/XE300EN	
Upper rollers (standard shoe)	2
Lower rollers	9
Number of links and shoes per side	48
Overall track length	4940

## ■ Swing mechanism

The swing mechanism uses an axial piston motor, driving a 2-stage planetary reduction gear for maximum torque bathed in oil.

- Swing bearing: single-row, shear type ball bearing with induction hardened internal gear
- Internal gear and pinion immersed in lubricant

### • Swing speed & torque

XE300E/XE300EN	
Maximum swing speed	10.3 rpm
Maximum swing torque	97.8 kN·m

## ■ Drive

An independent, high-torque axial piston motor through a planetary reduction gearbox drives each track. Two levers with foot pedals guarantee smooth travel with counter-rotation on demand. The track frame protects the travel motors with hydraulically released multi-disc brakes and planetary gears.

### • Swing speed & torque

XE300E/XE300EN	
Travel speed (low - high)	3.3-5.5 km/h
Maximum traction	255.6 kN
Maximum gradeability	35° / 70%

## ■ Hydraulic system

The XICS (XCMG Intelligent Control System) is the brain of the excavator - minimizing fuel consumption and is enabling the efficiency of the hydraulic system to be optimized for all working conditions. To harmonize the operation of the engine and the hydraulics, the XICS is connected to the engine's electronic control unit (ECU) via a data transfer link.

- The hydraulic system enables independent and combined operations -2-speed travel offers either increased torque or high travel speed.
- Cross-sensing pump system and auto-deceleration system improves fuel efficiency.
- 7 work modes, 3 power modes.
- Computer controlled pump flow control.

### • Pump flow and system pressure

XE300E/XE300EN	
Main pumps, type	*2 × variable displacement tandem axial piston pumps
Maximum flow	2 × 320 L/min
Pilot pump, type	Gear pump
Maximum flow	20 L/min
Relief valve settings	—
Pressure up	34.3/37.3 MPa
Travel	34.3 MPa
Swing	30 MPa
Pilot	3.9 MPa

## ■ Hydraulic cylinders

High-strength steel piston rods and cylinder bodies. A shock-absorbing(cushion) mechanism fitted in all cylinders for shock-free operation and extended piston life.

Cylinders	Quantity	XE300E/XE300EN
Boom	2	140 × 100 × 1407
Arm	1	160 × 110 × 1646
Bucket	1	140 × 100 × 1144

## ■ Weight(Triple grouser)

Shoe width (mm)	Operating weight (t)	Ground pressure (kPa)
600(Std.)	33600	63.2

## ■ Fluid capacities

XE300E/XE300EN	
Fuel tank	520 L
Hydraulic oil tank	220 L
Engine oil	24 L

## ■ Cab

Optimal climate control is provided by the integrated air-conditioning and heating system. An automatically- controlled fan supplies the pressurized and filtered cab air, which is distributed throughout the cab from multiple vents. The operator can adjust the ergonomic seat and joystick console separately according to his preferences.

### • Noise emission

XE300E/XE300EN	
Noise level LpA [ISO 6396]	73 dB(A)
Noise level LwA [ISO 6395]	104 dB(A)

## ■ Component weights

Item	Unit	XE300E/XE300EN	Remarks
Upper structure without front	kg	16958	With counterweight
Lower structure assembly	kg	10231	600 mm shoe
Front assembly	kg	3936	Without cylinder
Counterweight	kg	5500/6000	SLR counterweight
Boom	mm / kg	6150/2180	Including bushing
Arm	mm / kg	3200/1184	Including bushing

## ■ Buckets

Bucket type	Capacity (m³)ISO	Width (mm)		Weight (kg)	Boom 6.15 m		
		With side cutters	W/o side cutters		Arm 3.2 m		
GP	1.8	1602	1602	1452	C		
	1.6	1450	1450	1441	B		
HD	1.4	1300	1300	1375	B		
	1.4	1300	1300	1369	A		

GP : General purpose; HD: Heavy duty; SD: Severe duty;

A: Suitable for materials with a density less than or equal to 2100 kg/m³;

B: Suitable for materials with a density less than or equal to 1800 kg/m³;

C: Suitable for materials with a density less than or equal to 1500 kg/m³;

Based on ISO 10567 and SAE J296, arm length without quick-coupler. For reference only.



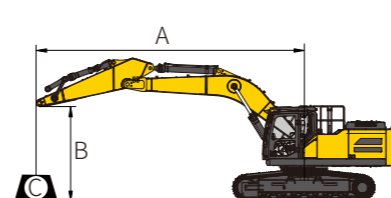
# Lifting Capacities

## ■ Model: XE300E Standard undercarriage width: 3190 mm · W/o bucket · Unit (kg)

B \ A	3.0 m		4.5 m		6.0 m		7.5 m		9.0 m		At Max.Reach			
	☺	☻	☺	☻	☺	☻	☺	☻	☺	☻	☺	☻	A	
7.5 m	kg						*7130	5890			*6030	6030	7.3 m	
6.0 m	kg						*7550	5760			*5770	5050	8.2 m	
4.5 m	kg				*8350	8010	*7550	5760			*5750	4480	8.8 m	
3.0 m	kg			*12690	11400	*9670	7610	*8210	5560	6990	4260	*5910	4190	9.1 m
1.5 m	kg			*14970	10680	*10910	7240	*8890	5370	6900	4180	*6270	4090	9.1 m
0.0 m	kg			*16020	10330	*11720	7000	8830	5230			*6890	4170	8.9 m
-1.5 m	kg	*14400	*14400	*15980	10240	*11920	6890	8760	5170			7460	4470	8.4 m
-3.0 m	kg	*20810	*19970	*14970	10330	*11330	6930	*8650	5230			*8390	5130	7.6 m
-4.5 m	kg	*17120	*17120	*12650	10590	*9330	7140					*8450	6630	6.4 m

## ■ Model: XE300EN Standard undercarriage width: 2990mm · W/o bucket · Unit (kg)

B \ A	3.0 m		4.5 m		6.0 m		7.5 m		9.0 m		At Max.Reach			
	☺	☻	☺	☻	☺	☻	☺	☻	☺	☻	☺	☻	A	
7.5 m	kg						*7130	5890			*6030	6030	7.3 m	
6.0 m	kg						*7550	5760			*5770	5050	8.2 m	
4.5 m	kg				*8350	8010	*7550	5760			*5750	4480	8.8 m	
3.0 m	kg			*12690	11400	*9670	7610	*8210	5560	6990	4260	*5910	4190	9.1 m
1.5 m	kg			*14970	10680	*10910	7240	*8890	5370	6900	4180	*6270	4090	9.1 m
0.0 m	kg			*16020	10330	*11720	7000	8830	5230			*6890	4170	8.9 m
-1.5 m	kg	*14400	*14400	*15980	10240	*11920	6890	8760	5170			7460	4470	8.4 m
-3.0 m	kg	*20810	*19970	*14970	10330	*11330	6930	*8650	5230			*8390	5130	7.6 m
-4.5 m	kg	*17120	*17120	*12650	10590	*9330	7140					*8450	6630	6.4 m



- ☺ : Over front
- ☻ : Over side or 360°
- A: Lifting point radius
- B: Lifting point height
- C: Lifting weight

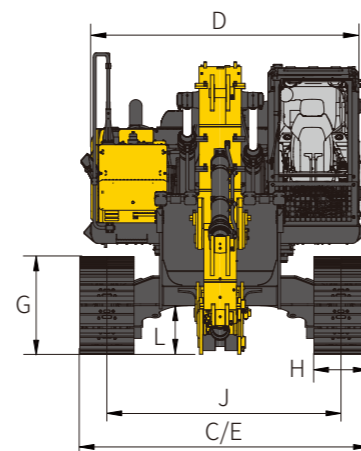
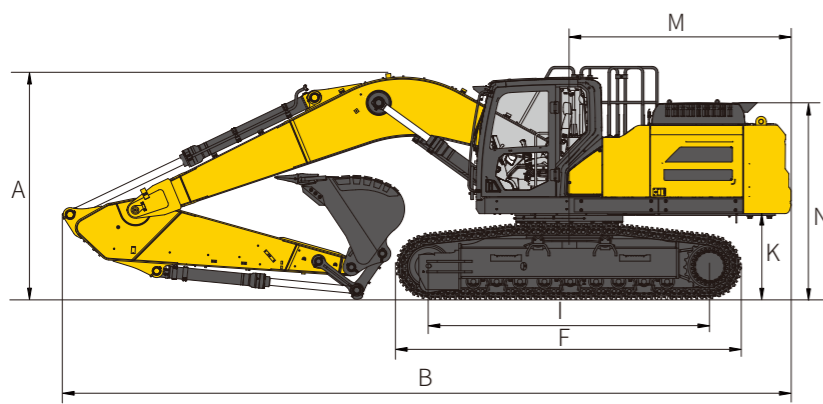
1. The lifting capacity is based on the ISO10567 standard.
2. \* = The maximum lifting capacity is limited by the hydraulic capacity of the machine.
3. The lifting capacity does not exceed 87 % of the hydraulic capacity or 75 % of the tipping load with the machine on level and firm ground.
4. The operator should be familiar with the machines operating- and maintenance manual. Local regulations concerning the safe operation of machinery must be followed at all times.
5. The lift diagrams only covers machines that are originally built by XCMG: without lifting chains and any other lifting equipment.
6. When the excavator is used to lift or handle materials, it must comply with local regulations and be equipped with the necessary hose burst valves and an overload warning device complying with EN474-5.



# Dimensions & Working Range



# Standard and Optional Equipment



## Dimensions

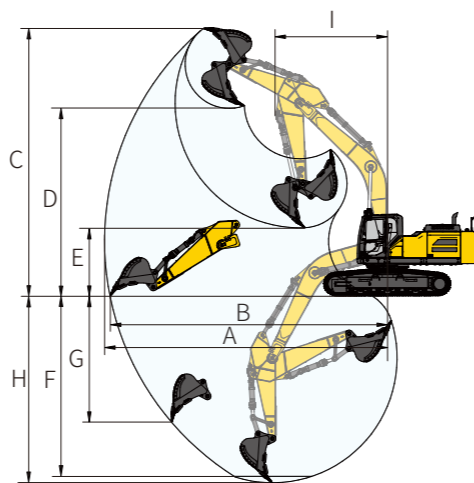
XE300E/XE300EN		
A	Overall height-mm	3425
B	Overall length-mm	10430
C	Overall width-mm	3190
D	Upper structure width-mm	2970
E	Chassis width (extended/retracted)-mm	3190
F	Track length-mm	4940
G	Track height-mm	1059
H	Standard track shoe width-mm	600
I	Track wheelbase-mm	4024
J	Track gauge (extended/retracted)-mm	2590
K	Counterweight ground clearance	1223
L	Minimum ground clearance	538
M	Tail Swing Radius	3174
N	Hood height	2862
	Length of boom-mm	6150
	Length of arm-mm	3200

## Working range

XE300E/XE300EN		
A	Maximum reach-mm	10843
B	Maximum reach at GRP-mm	10657
C	Maximum digging height-mm	10400
D	Maximum unloading height-mm	7263
E	Minimum unloading height-mm	2538
F	8 ft. level floor digging depth-mm	6858
G	Maximum vertical digging depth-mm	5436
H	Maximum digging depth-mm	7021
I	Minimum swing radius-mm	3961
	Length of boom-mm	6150
	Length of arm-mm	3200

## Digging forces

XE300E/XE300EN		
	Bucket (Normal/Press. Up)	206/222 kN
	Arm (Normal/Press. Up)	155/167 kN



## Engine

AD blue	●
Automatic preheating	●
Fuel-water separator with water level indication sensor	●
Axial seat air cleaner	●
50°C high temperature ambient cooling assembly	●
Dust screen for radiator	●
Oil-water quick release device	●
Electronically controlled silicone oil clutch	●
Fuel filling pump	●
Air pressure difference indicator	●
Auto-idle function	●
Air prefilter	●

## Hydraulic system

Auxiliary hydraulic valve	●
One & two way hydraulic line for hammer & thumb piler	●
Hydraulic quick coupler lines	●
Tilting and rotating lines	●
Hydraulic oil ISO VG 46	●
Hydraulic oil ISO VG 32	○
Hydraulic oil ISO VG 68	○
Right electric proportional joystick	●
Left electric proportional joystick	●
Spare valve plate	●
Gauge pressure monitoring	●
PTO pump	●

## Cab & Interior

Pressurized cab	●
Right and left control box	●
Rain visor	●
Front windshield divided 70/30 ratio	●
Double laminated windshield and other toughened windows	○
Sliding fold-in front window	●
Air conditioner with defroster (automatic type) (Pressurization function)	●
Color LCD monitor	●
Air suspension seat with heater	●
Travel control pedal with detachable manual control lever	●
Cup holder	●
Coat hook	●
Washable floor mat	●
Retractable seat belt	●
High and low travel speed switch	●
One-key boost mode	●
Visor curtain	●
Top sunroof	●
Windshield wiper with intermittent feature	●
Rear window emergency exit	●
Hammer for emergency escape	●
File packet	●
Double stereo speaker	●

## Undercarriage

Width of standard chassis-2990 mm (XE300EN) , 3190mm (XE300E)	●
600 mm (24") triple grouser track shoes	●
700 mm (28") triple grouser track shoes	○
800 mm (31") triple grouser track shoes (XE300E)	○
2x3 rail clamps	●
2x48 track shoes	●
2x9 track rollers, 2x2 carrier rollers	●
Protective device kit: undercarriage bottom sealing plate, travel motor sealing plate	●

## Working device

Boom 6.15 m	●
Arm 3.2 m	●
1.6 m³ heavy duty bucket	○
1.4 m³ rock bucket	○
1.8 m³ general purpose bucket	○
Miller hydraulic quick coupler with CE	○
XCMG hydraulic quick coupler without CE	○
XCMG hydraulic hammer with CE	○

## Electronic system

Battery (2x850 CCA)	●
70 A 24 V AC generator	●
7.8 kW starter motor	●
5 V USB interface	●
Emergency stop	●
Right-view camera	●
Rear-view camera	●
AM-FM radio with digital display	●
DAB radio	○
Travel buzzer with switch	●
Beacon lamp	●
2 LED cab-mounted front lights	●
1 LED cab-mounted rear light	●
2 LED boom-mounted lights	●
Ceiling light	●
12 V power interface	●

## Counterweight

5.5 t counterweight (XE300E)/6 t counterweight (XE300EN)	●
--	---

## Lubrication system

Automatic lubrication system, including the arm, boom and swing points	●
--	---

## Safety

Anti-collision beam	●
Driving door locks and cabin locks	●
Alarm horn	●
Quick coupler switch with warning alarm	●
Isolation plate between engine and oil pump chamber	●
Battery disconnection switch	●
Overheat alarm	●
Safety handrails and pedals	●
Anti-skid plate/anti-skid paste	●
Hydraulic safety locking lever	●
Left and right rearview mirrors	●
Safety valves for boom cylinder	●
Safety valves for arm cylinder	●
Roll over protective structure (ROPS)	●
Operator protective guards (OPG)	○
Safety net on the front lower windshield	●

Standard: ●  
Optional: ○

Some of these options may be standard in some markets. Some of these options may not be available for certain markets. Please check with your local XCMG dealer for more information about availability or to adapt your machine to your application needs.

# Optimum Services, XCMG Guaranteed



XCMG-approved attachments



Genuine parts



Extension of warranty



Financial solutions



Maintenance contract



Telematics

## Professional Integrated Complete Solutions

The XCMG group has built a strong reputation based on the quality, reliability and durability of its construction machinery. What's more, XCMG has gradually established a service network to constantly provide its local integrated and highly efficient complete solutions for all customers.



## Full Range of Services Ready for you

In order to respond to your needs as fast as possible, XCMG experts are on their way to your job site from one of our facilities near you. A Full range of services is available in order to reduce your total cost of ownership and increase your revenue.

### XCMG Global Spare Parts System



Mobile cranes



Excavators



Aerial work platforms



Wheel loaders



Road machinery

