



SOLID TO SUCCEED

XCMG European Sales and Services GmbH

Europark Fichtenhain B4, 47807 Krefeld, Germany
Email : info@xcmg-ess.de



WWW.XCMGGLOBAL.COM
XCMG OFFICIAL WEBSITE



XE135E

CRAWLER EXCAVATOR



Operating weight 14800kg

Bucket capacity 0.55m³

Rated power 90kW

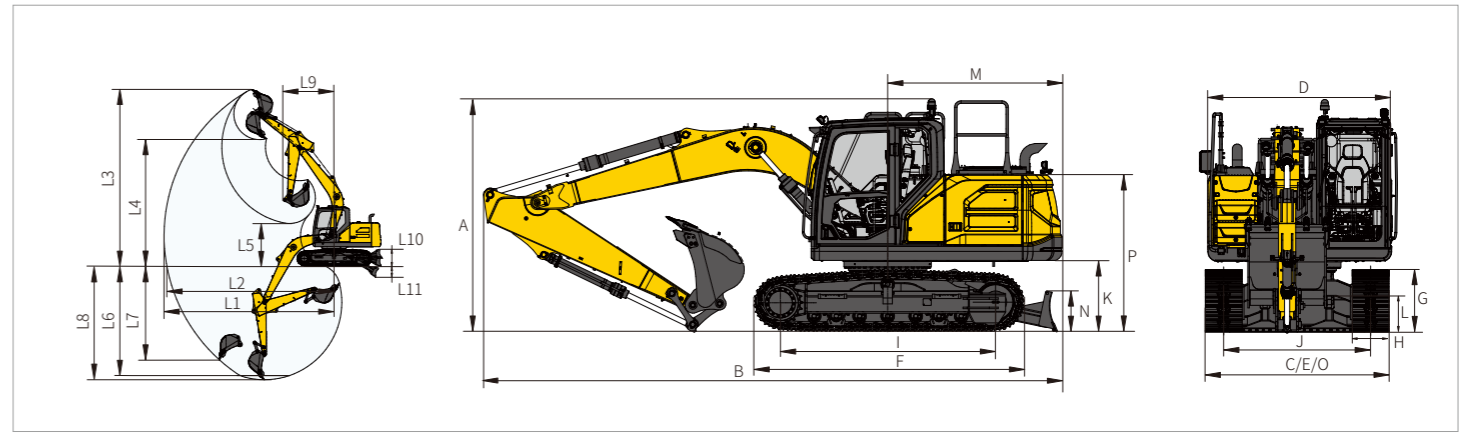


SOLID TO SUCCEED

SOLID TO SUCCEED

Applications : Widely used in hydropower, transportation, municipal engineering, landscaping, farmland reconstruction and oil pipeline constructions.

Features : 3 m long arm as standard provides a wider digging range to improve the operating conditions adaptability. PTO pump as standard can independently control the rotary pipeline to improve the precise flow control. The full-size reinforced chassis-structure and working device ensure the stability of the whole machine while working with strong digging force.

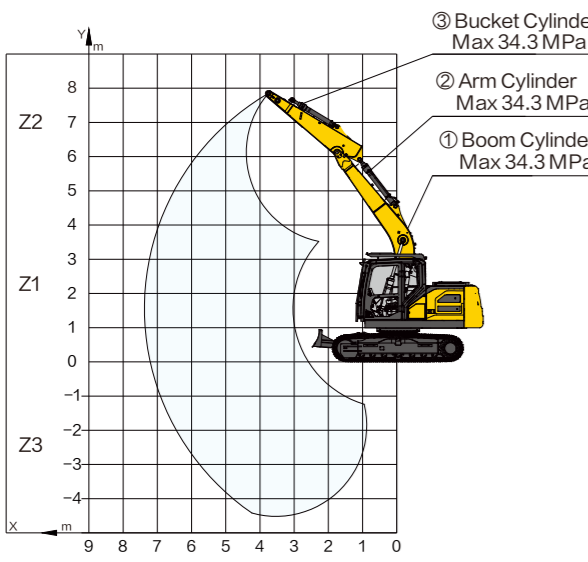


Item contents	Unit	Parameters
Working range		
L1 Maximum reach	mm	8145
L2 Maximum reach at GRP	mm	8005
L3 Maximum digging height	mm	8620
L4 Maximum unloading height	mm	6195
L5 Minimum unloading height	mm	1490
L6 Digging depth at 8 feet floor length	mm	5450
L7 Maximum vertical digging depth	mm	4470
L8 Maximum digging depth	mm	5575
L9 Minimum swing radius	mm	2475
L10 Maximum lifting height of dozer blade	mm	400
L11 Maximum cutting depth of dozer blade	mm	530

Item contents	Unit	Parameters
Dimensions		
A Overall height	mm	3135
B Overall length	mm	7825
C Overall width	mm	2490
D Upper structure width	mm	2490
E Undercarriage width (extended/retracted)	mm	2490
F Track length	mm	3643
G Track height	mm	836
H Standard track shoe width	mm	500
I Crawler base	mm	2917
J Track gauge (extended/retracted)	mm	1990
K Counterweight ground clearance	mm	940
L Minimum ground clearance	mm	466
M Rear-end swing radius	mm	2360
N Dozer blade height	mm	525
O Dozer blade width (unfolded/folded)	mm	2490
P Height of engine hood	mm	2225

Never attempt to lift or hold any load in excess of the rated lifting capacity at the specified lifting radius and height. The lifting point is located on the lifting eye of the arm (Bucket weight is not included), any additional attachment such as bucket should be deducted from the lifting weight. When determining the net lifting weight allowed for the machine, the weight of the slings and any auxiliary lifting devices must be deducted from the rated lifting capacity. Lifting capacity is based on the machine standing on firm and level ground. The operator should consider working conditions such as soft or uneven ground. Before operating the machine, the operator should familiarize himself with the safety procedures in the relevant manual.

		kg										Dozer Blade up	
		In travel direction					Against travel direction					Right angle to travel direction	
LD	Y	1.5m		3.0m		4.5m		6.0m		MAX		m	
		X		X		X		X		X			
2.52m	Z2					*3190	2880	2950	1820	2580	1570	6.5	
	Z1			*4740	*4740	*3600	2350	2700	1600	2190	1310	7.0	
	Z3	*4120	*4120	*5620	4080	*4020	2280	2670	1570	2240	1340	6.8	



Note 1 The lifting capacities in the table refer to the case where no external thrust intervention is included.
 Note 2 The lifting capacities in the table should not exceed 75% of the minimum tipping load or 87% of the hydraulic capacity.
 Note 3 The least stable position is on the side of the excavator.
 Note 4 The lifting capacity table applies only to machines originally built and normally assembled by the manufacturer.
 Note 5 The machine is rated for an operating weight of 14800 kg (32628 lb), which includes 0.5 m (1.64 ft) steel tracks, a 4.6 m (15.1 ft) boom, a 2.52 m (8.3 ft) arm, a 2250 kg (4960 lb) counterweight, all working fluids, and a 75 kg (165 lb) operator, exclusive of the bucket.
 Note 6 Lifting capacity shall be in accordance with ISO 10567:2007.
 Note 7 For all configurations of track specifications, the lifting capacity is kept within ± 5%.

Item contents	Unit	Parameters
Operating weight	kg	14800
Engine		
Engine brand/model	-	Cummins/F3.8
Rated power/rpm	kW/rpm	90/2200
Direct injection	-	√
Electric injection	-	√
4-stroke	-	√
Water-cooled	-	√
Turbocharged	-	√
Air-to-Air intercooling	-	√
Stroke	mm	115
Cylinder bore	mm	102
Number of cylinders	-	4
Maximum torque/rpm	N·m/rpm	500/1500
Displacement	L	3.8

Tracks	Unit	Parameters
Standard track shoe width	mm	500
Number of track shoes (per side)	-	44
Number of track rollers (per side)	-	7
Number of track carrier rollers (carrierplate) (perside)	-	1

Cab standard		
ISO 10262: 1998 (OPG)	-	√
ISO 12117-2: 2008 (ROPS)	-	√

Oil capacity		
Fuel tank capacity	L	250
DEF tank capacity	L	25
Hydraulic oil tank capacity	L	90

Item contents	Unit	Parameters
Hydraulic system		
Main pump	-	2 × Variable displacement pumps
Pilot pump	-	1 × Gear pump
PTO pump	-	1 × Gear pump
Maximum flow rate of main system	L/min	2 × 120
PTO pump flow rate	L/min	53
Main system pressure	MPa	34.3
Main system pressure (power-max pressure)	MPa	37
Pilot system pressure	MPa	3.9
PTO pump pressure	MPa	25
Traveling system pressure	MPa	34.3
Swing system pressure	MPa	25

Main performance		
Travel speed (high/low)	km/h	4.7/2.9
Swing speed	r/min	11.3
Maximum swing torque	kN·m	32
Gradeability	-	35° (70%)
Ground contact pressure	kPa	45.77
Bucket digging force (SAE)	kN	107
Arm digging force (SAE)	kN	80
Maximum traction force	kN	134

Standard		
Length of boom	mm	4600
Length of arm	mm	2520
Bucket capacity	m ³	0.52 <small>(Heavy duty bucket)</small>

Optional		
Length of boom	mm	-
Length of arm	mm	-
Bucket capacity	m ³	0.52 <small>(Heavy duty bucket)</small> 0.52 <small>(Rock bucket)</small>