

# EFFICIENT COMPACTION

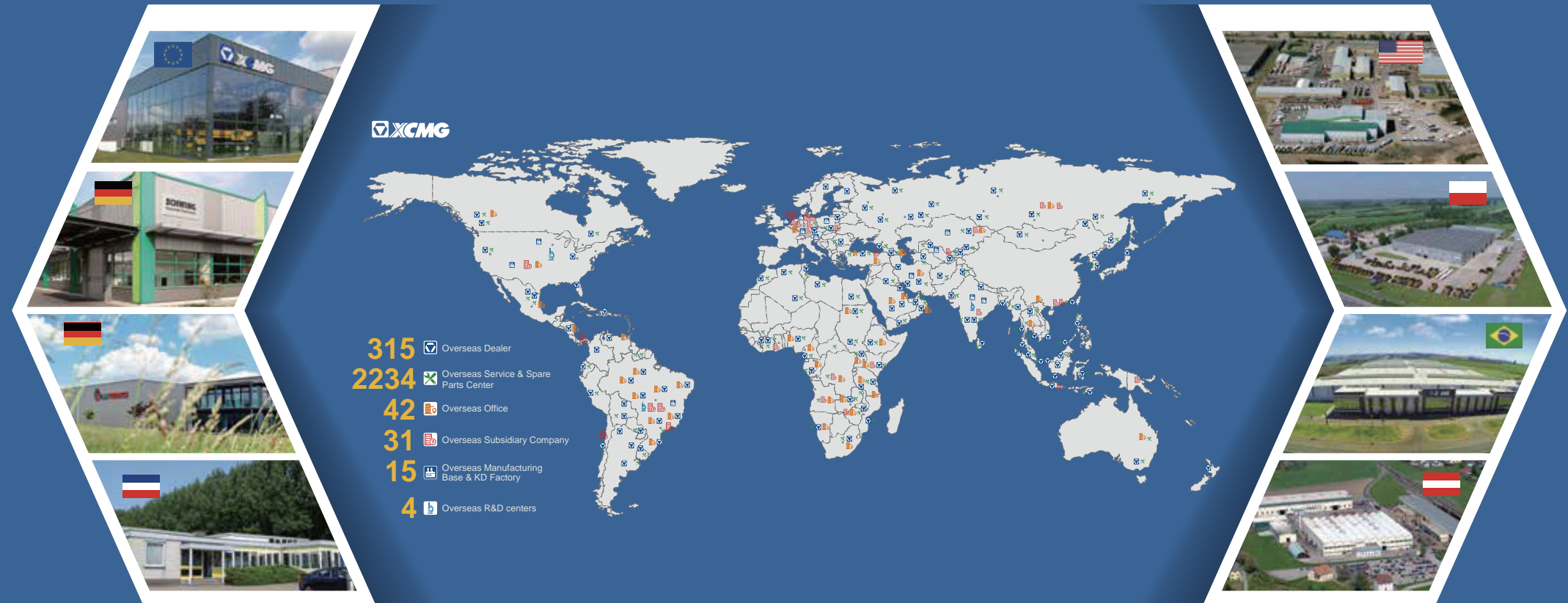
ROBUST TRACTION FORCE SPECIALIZED  
FOR BACKFILL COMPACTION

## XH235 / XH285 / XH365



EU STAGE III  
EU STAGE V / US TIER 4F





## INTRODUCTION OF XCMG

XCMG, as a leading enterprise valued of 100 billion RMB, with the largest scale, the best technology level, the largest export volume, and high competitiveness and influence in China's construction machinery industry, has been occupying the first place in China's construction machinery industry for decades, and it now ranks the third in the world industry and the 395th among the world's top 500 brands.

The main products by XCMG consists of 16 categories of equipment such as hoisting machinery, excavation machinery, concrete machinery, mining machinery, earth-moving machinery and road machinery, etc., as well as three categories of key components such as hydraulic system, transmission system and electric control system. Among above-mentioned, hoisting machinery ranks first in the world, and package solution of road construction and maintenance machinery, piling machinery and concrete machinery are among the first-class bloc in the world.

XCMG has accumulated more than 8000 approved patents, including more than 1900 invention patents and more than 130 PCT international patents. Entities of R&D centers, manufacturing plants or KD factories are in operation in more than 10 countries such as Germany, the United States, Brazil and India, XCMG has also acquired three European enterprises including Schwing in Germany. The Brazil manufacturing plant, with an investment of 350 million dollars to build up factories on a bare ground, has become a model of economic cooperation between China and Brazil. At present, XCMG products are exported to 187 countries and regions, covering 97% of the countries along "The Belt and Road" area. In export business to 35 countries, XCMG's proportion ranks NO. 1, with a steady first place within Chinese industry in terms of annual export volume and overseas income.

## ■ Features

> With heavy duty structures with enhanced linear load, landfill compactor is widely used for. It is mainly used for bulldozing and compaction of solid fill in landfill to reduce the land occupation of landfill and prolong the service life of landfill. In addition, it can also be used for the shoveling and compaction of large foundation filling projects, including road foundations, hydraulic engineering dams, and airports. XCMG landfill compactors are available in a wide range of models, with weights from 23 to 36 tons and power outputs from 194 to 343 kW. This extensive product line is designed to meet the diverse compaction needs of landfill applications.





# Landfill Compactor

- XCMG 5 series family industrial design. The XCMG roller product line features a family design language, offering a unified appearance, robust shape, and high brand recognition.

- The fixed hood side door and movable hood open at a large angle, allowing for easy cleaning and maintenance operations.

- The movable hood features a sleek design.

- Spacious service platform, reinforced platform guardrail.

- ROPS/FOPS.

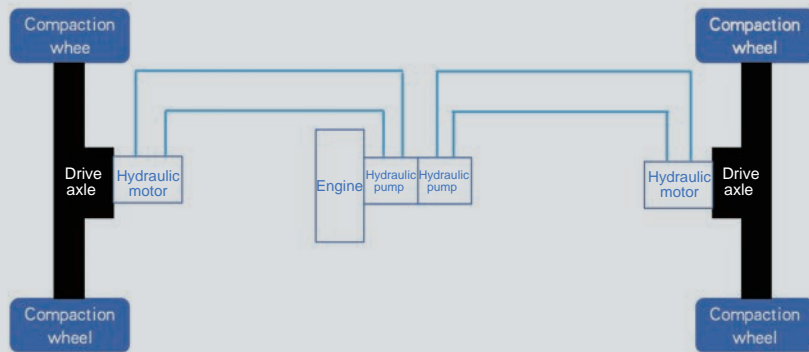




# Propel System

Efficient and reliable drive system for different tonnage products. 100% climbing ability, suitable for a variety of working conditions.

Dual-pump, dual-motor, dual-axle drive system  
(XH235、XH285、XH365)

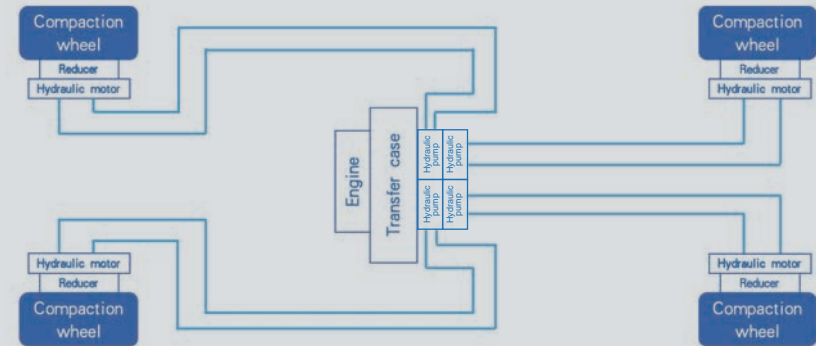


- The heavy-duty drive axle equipped with NO-SPIN differential can always transmit torque to the wheel edge, up to 100%, giving full play to the ground adhesion and avoiding slippage.

- Full hydraulic dual wheel drive dual pump dual motor drive.

- High-pressure hydraulic system, higher transmission efficiency.

Four pumps, four motors and four reducer drive system  
(XH365)



- Four-wheel speed adjustment based on articulated turning characteristics can adjust the speeds of inner and outer, front and rear wheels in real time, give full play to ground adhesion and avoid slipping.

- Full hydraulic four wheel drive four-pump four-motor drive.

- High-pressure hydraulic system, higher transmission efficiency.



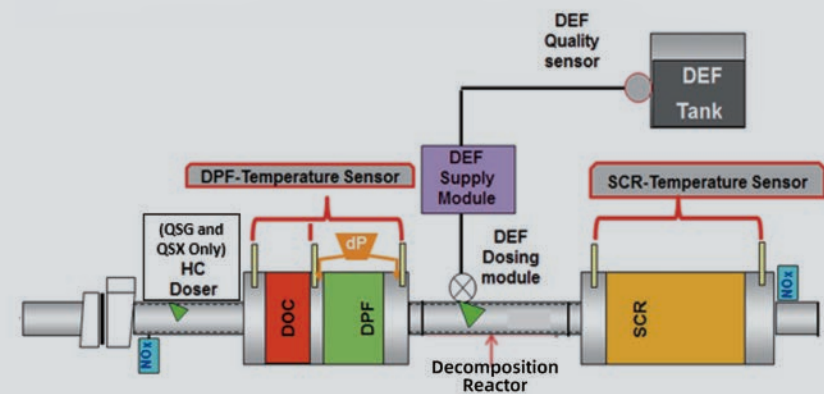
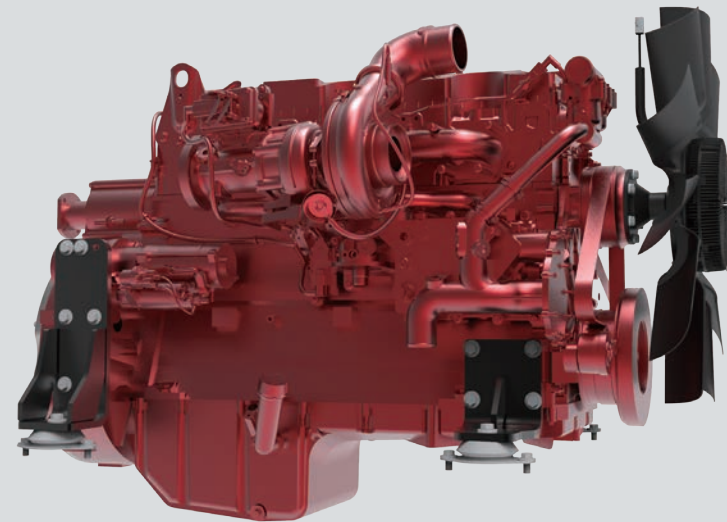
# Power System

■ Powerful power system, the entire series is equipped with Cummins high-power electronically controlled engine, water cooling, turbocharging, high-pressure common rail, strong power, large power reserve, can provide sufficient power for the equipment under various working conditions.

■ Mature supporting facilities, long-tested by the market, less maintenance time, longer continuous working hours, mean less TCO (total cost of ownership)

■ Green and environmental protection, the after-treatment adopts DOC+DPF+SCR route, which meets the requirements of EU stage V and US EPA Tier IV emission standards; The stage III silencer technology route is adopted. The exhaust system is simple, does not require exhaust gas after-treatment, and is easy to maintain.

■ The intelligent temperature control system based on speed control keeps the engine in a high-efficiency and fuel-saving state.



(EU STAGE V/US Tier 4F Technology roadmap )



# Working Device



■ Unique padfoot arrangement is suitable for various working conditions, making the compaction operation more even and efficient.



■ High-strength mud scraping teeth are installed at the front and rear of the compaction wheel to avoid the accumulation and entanglement of foreign objects. Rope scrapers are installed near the front and rear of the compaction wheel to avoid waste cables wrapping around the drive shaft and ensure continuous compaction.



■ The structural form of wear resistant tips + base seat realize the crushing and squeezing function, which increases the compaction effect and adhesion.



■ Large-capacity push blade to assist in bulldozing the front garbage dump, with a volume of up to 12 cubic meters. The upper part is a grid structure, and the front part has a good field of view, which is convenient to observe the construction situation.



■ Fully enclosed V-shaped bottom to prevent garbage, sundries, etc. from entering the power compartment.



■ The large-angle articulation steering and wide-range swing ensure uniform compaction of all types of terrain. Higher passability.



# Comfort Cabin

The cab is well-sealed and equipped with a pressurization system with HPEA filter layer. The fresh air volume reaches up to 204 m<sup>3</sup>/h, providing an ample supply of fresh air, essential for maintaining optimal driver comfort.



■ The built-in plasma sterilization device ensures a clean and sanitary cab microenvironment.



■ High-quality suspension seat with multi-level adjustment to meet the sitting needs of most people.



■ Ergonomic keypad operation arrangement.



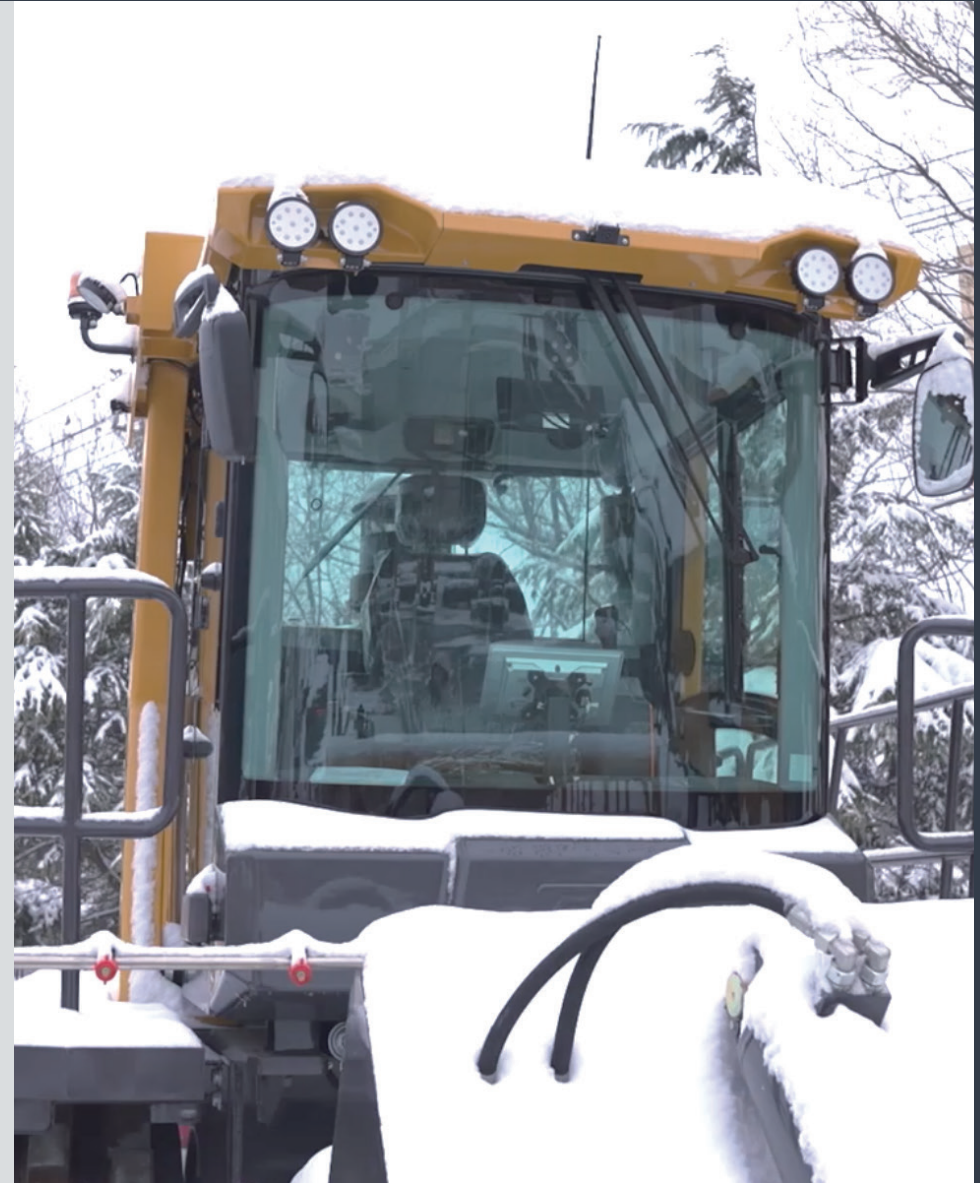
■ Double electronic lever operation to reduce fatigue.



■ Luxurious interior, rich configurations: reading lights, radio, overhead stereo, heating and cooling air conditioning, front and rear windscreen wipers, etc.

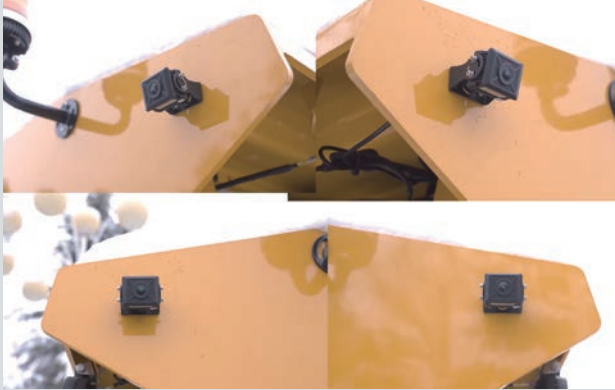


■ The vehicle is fitted with tempered glass throughout. In the event of glass damage caused by external forces, the resulting fragments will form small obtuse-angled particles similar to honeycomb. These particles are not likely to cause serious harm to the human body.





# Safety Guarantee and Easy Maintenance



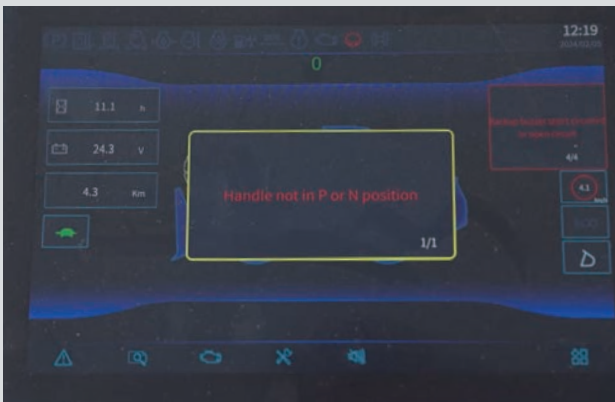
■ Four high-definition cameras are positioned outside the cab, each equipped with a 360-degree surround view system and reversing images. This standard feature is designed to enhance safety during construction operations.



■ The whole series comes standard with ROPS and overhead dual rotary beacon lights.



■ The machine is equipped with three-level braking, service braking, parking braking, and emergency braking.



■ The engine status is monitored in real time, and the system is equipped with a module that shuts down the engine in the event of an abnormality.  
■ Component level, system level, node level three-level fault diagnosis system, timely warning and convenient investigation.



■ The hood opens considerably, which is convenient for maintenance.



■ Wide maintenance platform, convenient for maintenance operation and access.



# Technical Parameters

Items	XH235	XH285	XH365	XH365
Machine weight/kg	23800	28500	36500	36500
Emission standard	StageIII StageV/Tier 4F	StageIII	StageIII	StageIII StageV/Tier 4F
Engine model	Cummins QSB6.7	Cummins QSL8.9	Weichai WP13	Cummins X12
Engine type	Turbocharger water-cooled electrical control			
Engine power /kW	194	242	353	343
Rated speed	2100	2100	2100	1800
Drive method	Hydraulically driven, dual pump dual motor dual axle, drive axle equipped with NO-SPIN differential			Hydraulic drive, four pumps, four motors, four reducers, four-wheel independent drive
Service brake	Hydrostatic brake			
Parking brake	Input end normally closed multi-disc brake + hydrostatic brake			
Secondary brake	Input end normally closed multi-disc brake + hydrostatic brake			
Drum width(front/rear) /mm	1000/1000	1200/1245	1200/1245	1200/1245
Drum maximum outside diameter /mm	1660	1660	1860	1860
Working width(front/rear) / mm	3045/3260	3550/3790	3550/3790	3550/3790
Push blade width /mm	3320	3800	4000	4000
Push blade height /mm	2025	2025	2025	2025
Travel speed/km /h	0-5/0-12	0-5/0-12	0-5/0-12	0-5/0-12
Steering angle /°	40	40	40	40
Steering system	Articulated	Articulated	Articulated	Articulated
Steering control	Hydraulic	Hydraulic	Hydraulic	Hydraulic
Swing angle /°	15	15	18	18

# Optimum Services , XCMG Guaranteed



XCMG approved attachments



Genuine parts



Financial solutions



Maintenance contract



## Full Range of Services Ready for you

In order to respond to your needs as fast as possible, XCMG experts are on their way to your job site from one of our facilities near you. Full range of services are available in order to reduce your total cost of ownership and increase your revenue.

## Professional Integrated Complete Solutions

XCMG group has built a strong reputation based on the quality, reliability and durability of its construction machinery. What's more, XCMG has gradually established a service network to constantly provide its local integrated and highly efficient complete solutions for all customers.

## XCMG Global Spare parts System



Mobile cranes



Excavators



Aerial work platforms



Wheel loaders



Road machinery

# Optimum services , XCMG Guaranteed



Cummins engine



Genuine parts



Extension of warranty



Financial solutions



Maintenance contract



Telematics



Monitoring systems

## Professional Integrated Complete Solutions

XCMG group has built a strong reputation based on the quality, reliability and durability of its construction machinery. What's more, XCMG has gradually established a service network to constantly provide its local integrated and highly efficient complete solutions for all users.

## Full range of services ready for you

In order to respond to your needs as fast as possible, XCMG experts are on their way to your job site from one of our facilities near you. Full range of services are available in order to reduce your total cost of ownership and increase your revenue.



XCMG Global Spareparts System



Roller



Motor grader



Paver



Milling machine



Cold recycler



Truck-mounted maintenance product

