

XP165U



XP165U Pneumatic Tire Roller

XP165U pneumatic tire roller is a medium-tonnage pneumatic tire roller produced according to European market requirements, which will take pneumatic tires as working device for compacting paved materials. The pneumatic tire roller is mainly applicable for compacting operation of asphalt pavement, foundation layer, secondary foundation layer, dam and filling engineering. It is an ideal set of compacting equipment for building high grade highway, airport, port, dam and industrial construction site.

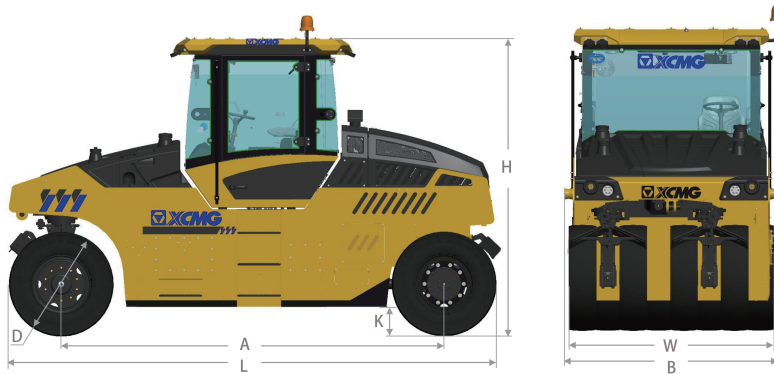
Performance and characteristics

- Front wheel dual-axle steering system reduces the damage to the ground when steering and improve the compaction quality.
- State-of-the-art double-axle drive technology helps to achieve up to 30% climbing ability and maximum 19km/h driving speed, contributing to remarkable efficiency and productivity.
- Electro-hydraulic proportional control technology implements the infinite displacement change of electronic pumps and motors, ensuring steady drive speed change and soft start/stop.
- Independent hydraulic automatic cooling system with adjustable fan speed according to engine water temperature, hydraulic oil temperature, inter-cooling temperature, reduces the noise of the whole machine and consumptions.
- Imported high-end rotary sliding seat, reduces fatigue and allow good visibility to the drum edge. Ergonomic imported electronic control joystick, more comfortable to operate. 5.7-inch color liquid crystal display, real-time monitor the whole machine status

Main dimensions

Unit: mm

Model	A	B	D	H	K	L	W
XP165U	3900	2175	1080	3000	280	5100	2075



Main specifications

Item	Content	Unit	XP165U
Weights	Operating weight	kg	8500
	Maximum operating weight	kg	16000
	Water quality	kg	10850
	Ballast weight	kg	2800
Maneuverability	Working speed(F/R)	km/h	0~19
	Gradeability	%	30
	Minimum turning radius(outer)	mm	8645
	Minimum ground clearance	mm	280
	Wheel base	mm	3900
	Wheel track	mm	510
	Steering angle	°	±30
	Oscillation angle	°	NA
	Oscillation of front wheel	mm	±50
	Braking distance	mm	≤7200
Compaction parameters	Drum width	mm	2075
	Overlapping quantity	mm	30
	Ground pressure	kpa	150~350
Engine	Model	-	CUMMINS F3.8
	Emission	-	EU StageV
	Rated power	kW	90
	Rated speed	r/min	2200
Tire	Spec.	-	11.00-20
	Air pressure	kPa	600~650
Capacities	Fuel tank	L	225
	Urea tank	L	24.5
	Water tank	L	433